

Complete Wide Band Commander Kit

Wide Band Commander Software



Power Cable



USB Cable

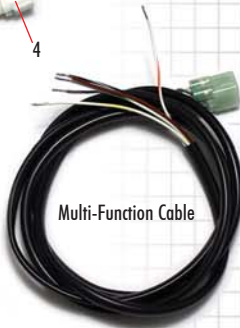


1. Gauge Connector
2. Power Cable Connector
3. Multi-Function Cable Connector
4. RPM Connector

Wide Band Commander Module



Multi-Function Cable



Gauge Mounting Hardware with Bulb Covers



Sensor Bung and Plug

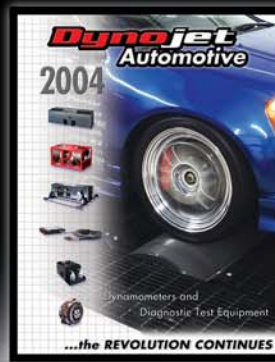


Bosch 5 Wire LSU4 type Wide Band Sensor



Wide Band O2 Sensor Wiring Harness

Catalogs Available from Dynojet



Auto Dyno Catalog - #98511210



Bike Dyno Catalog - #98521210



Power Sports Catalog - #D906

Dynojet

WIDE BAND COMMANDER



Dynojet

Dynojet Research, Inc.

2191 Mendenhall Drive

North Las Vegas, NV 89081

tel: 702.399.1423 • fax: 702.399.1431

toll free: 800.992.3525

AIR/FUEL RATIO MONITOR

The most complete kit available on the market today!

www.dynojet.com

www.widebandcommander.com

As the world leader in motorsports chassis dynamometers and diagnostic equipment, Dynojet Research Inc. is pleased to announce the Wide Band Commander.

The Wide Band Commander is a tuner's best friend. It provides a complete picture for proper air-to-fuel ratio analysis. Unlike many "Air/Fuel Systems" on the market that use inferior narrow band technology, this unit has the capability to read from 10.0:1 to 18.0:1 using a Bosch 5 wire LSU4 wideband sensor. This is by far the most complete kit available on the market today.

Once installed, the Wide Band Commander provides an "in-vehicle" dash mount AFR display gauge with a built in warning light, as well as data recording which can be retrieved and analyzed using the supplied software package.

Wide Band Commander Parts List			
Qty	Description	Qty	Description
1	Wide Band Commander Module	1	Bosch LSU 4 Wide Band Oxygen Sensor
1	2 1/16th Electric Gauge & Cable	1	Oxygen Sensor Cable
1	Power Cable	1	RPM Pickup Cable
1	Multi Function Cable	1	USB Software Cable
1	Oxygen Sensor Weld Boss & Plug	1	Gauge Mounting Hardware Kit
1	CD-ROM Software Package	1	9 volt Power Adaptor
1	Expansion Port Connector Seal	1	USB Port Connector Seal
2	Velcro Strips	4	Wire "T" Taps
1	Alcohol Swab	3	Cable Ties
1	Warranty Registration Card	2	Dynojet Decals

Features:

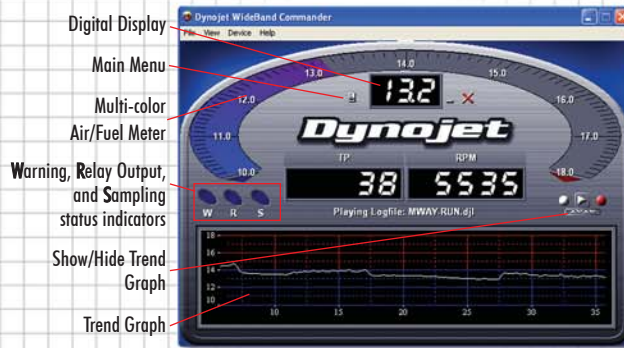
- Programmable output for solenoids, relays, etc.
- Programmable warning light output (built into supplied sensor)
- On board memory allows data to be logged without the use of a laptop/PC. Download the data at your convenience!
- Log file data can be played back in the software or exported as text.
- 0-5mA/0-5v output for aftermarket engine management/data acquisition systems
- Easy one-wire RPM & TPS hook up
- Durable enclosure and wire sheathing for years of trouble-free operation
- Utilizes inexpensive, readily available replacement sensor
- Dynolink compatible - allows the Wide Band Commander to communicate with WinPEP7



White face with black bezel



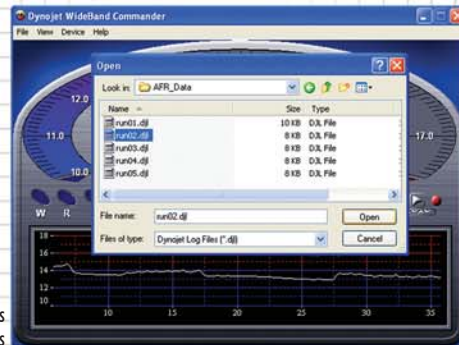
Black face with silver bezel



Easy-to-use Software Package



Configuration for RPM and TPS



Open Playback Files for analysis

Dynojet Wide Band Commander Kit



With Black face / Silver bezel Gauge (shown here)
Part #15-7001
Retail Price - **\$529.95**

With White face / Black bezel Gauge
Part #15-7002
Retail Price - **\$529.95**

WIDE BAND COMMANDER SPECIFICATIONS

- Power Requirement:** 11-15 VDC, 3A
- Dimensions:** 4.095" w x 2.82" h x .985" d
- Sensor:** Bosch LSU 4
- Inputs:**
 - Throttle Position: 0-5 VDC
 - RPM Pickup: Square wave, 0-12 V nominal (coil (-) tachometer signal)
 - Data Logging Switch: Switch to 12V, 7mA
- Outputs:**
 - Range (gasoline) Gauge: 10-18 lb air/ lb fuel
 - Data Acquisition Link: 0-10 VDC analog
 - Solenoid Output: 0-5 mA or 0-5 VDC analog
 - 2A (sinks to ground; does not Source 12V)
- Computer Connectivity:** USB 2.0, Windows 98se/ME/2000/XP Computer required
- Dynojet Dyno Connectivity:** TTL serial (Accessory cable required)
- Onboard Memory:** 256K Byte serial EEPROM
- Sampling rate:** 10 samples per second
- Time Limit:** Approximately 10 minutes
- Operating Temperature:** -20°F to 120°F